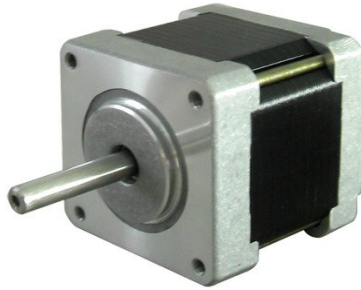




VRE 42HS33-0316A (NEMA 17) Stepper Motor



Specifications:

- Step Accuracy ----- ±5%
- Resistance Accuracy ----- ±10%
- Inductance Accuracy ----- ±20%
- Storage Temperature Range ----- -30°C~ +60°C
- Insulation Resistance ----- 100M Ω MIN. 500V DC
- Dielectric Strength ----- 500V AC 1min
- Radial Play ----- 0.02mm MAX. (450g Load)
- End Play ----- 0.08mm MAX. (450g Load)

| General specifications | | Electrical specifications | |
|----------------------------|---------------------------|--------------------------------|---------|
| Step Angle (°) | 1.8 | Rated Voltage (V) | 12 |
| Temperature Rise (°C) | 80 Max | Rated Current (A) | 0.31 |
| Ambient temperature (°C) | -20 ~ +50 | Resistance Per Phase (+10%Ω) | 38.5 |
| Number of Phase | 2 | Inductance Per Phase (+20% mH) | 21 |
| Insulation Resistance (MΩ) | 100 Min (500VDC) | Holding Torque (Kg.cm) | 1.6 |
| Insulation Class | Class B | Detent Torque (g.cm) | 120 |
| Max.radial force (N) | 28 (20mm from the flange) | Rotor Inertia (g.cm²) | 34 |
| Max.axial force (N) | 10 | Weight (Kg) | 0.22 |
| No.Of Leads | 6 | Frame Size | 42 x 42 |
| Shaft/ total length | 34 mm | Shaft dia | 5 mm |