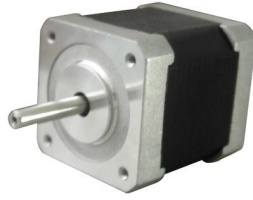




**VRE 57HS51-1006(NEMA 23) Stepper Motor**



**Specification:**

- Step Accuracy ----- ±5%
- Resistance Accuracy ----- ±10%
- Inductance Accuracy ----- ±20%
- Ambient Temperature Range ----- -20°C~ +50°C
- Storage Temperature Range ----- -30°C~ +60°C
- Insulation Resistance ----- 100M ) MIN. 500V DC
- Dielectric Strength ----- 500V AC 1min
- Radial Play ----- 0.02mm MAX. (450g Load)
- End Play ----- 0.08mm MAX. (450g Load)

General specifications		Electrical specifications	
Step Angle (°)	1.8	Rated Voltage (V)	6.6
Temperature Rise (°C)	80 Max (rated current, 2 phase on)	Rated Current (A)	1.0
Ambient temperature (°C)	-20 ~ +50	Resistance Per Phase (+10%Ω)	6.6 (25°C)
Number of Phase	2	Inductance Per Phase (+20% mH)	8.2
Insulation Resistance (MΩ)	100 Min (500VDC)	Holding Torque (Kg.cm)	7.2
Insulation Class	Class B	Detent Torque (g.cm)	200
Max.radial force (N)	28 (20mm from the flange)	Rotor Inertia (g.cm <sup>2</sup> )	275
Max.axial force (N)	10	Weight (Kg)	0.65
No.Of Leads	6	Frame Size	57 x 57
Shaft/ total length	20.6 / 51 mm	Shaft dia	6.35 mm