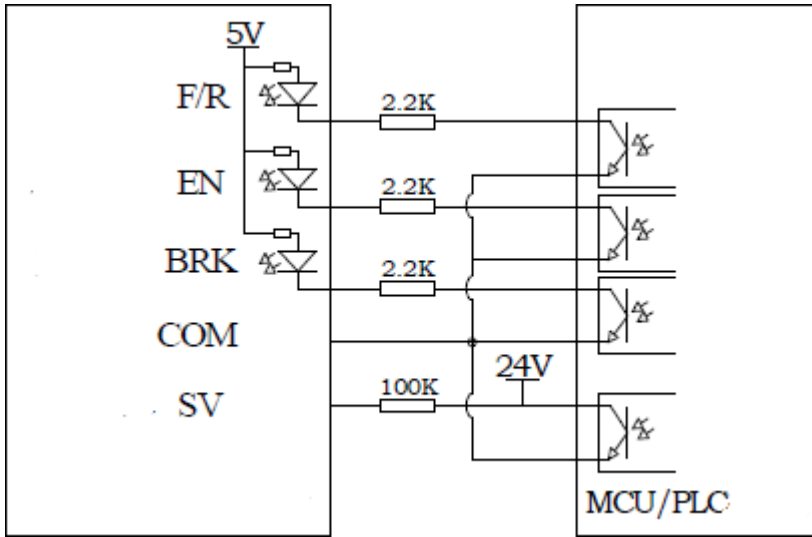




V.R. ENGINEERS

Manufacturers, &Suppliers :Complete Range of- Bearings * Load cells * Load cell-Indicators/Controllers* Stepper Motors*PMD Motors*BLDC Motors*A.C. Induction/ Geared Motors* Synchronous Motors*PM Motors*Motor Drives* Instrument Cooling Fans* sensors*Limit Switches* Dowel Pins*Engineering Lab Equipments...more than products



Mark	Define
DC+/DC-	Power supply input (DC12V~DC30V) don't make mistake for + and -
U,V,W	Motor leading wires connect thick wires
Hu,Hv,Hw	Hall signal leading wire connect (thin wires Hu, Hv, Hw)
REF+	Hall power supply + (for motor hall input +5V)
REF-	Hall power supply - (hall ground connect this port)
VCC	External potentiometer power supply port (just can use for potentiometer, can't for other external circuits)
SV	External potentiometer terminal (See note speed regulation)
COM	common port (Low level)
F/R	Direction: dangling or high level forward, low-level inversion Note 1
EN	Enable: high level/stop low-level/run note 1
BRK	Fast brake: high level/stop low-level/run note 1

Note 1: F/R and COM disconnect the motor forward, closed for reversal. EN closed with COM for running, disconnect for standby. BRK and COM side closed to run, disconnect for the brake. When using BRK control, shorter EN received COM port, when using EN control, shorter BRK received COM port.



V.R. ENGINEERS

**Manufacturers, &Suppliers :Complete Range of- Bearings * Load cells * Load cell-Indicators/Controllers* Stepper Motors*PMD
Motors*BLDC Motors*A.C. Induction/ Geared Motors* Synchronous Motors*PM Motors*Motor Drives* Instrument Cooling Fans*
sensors*Limit Switches* Dowel Pins*Engineering Lab Equipments...more than products**

Speed regulation way (see instructions):

- A. The internal potentiometer RV can be used for motor speed adjustment.
 - B. The external potentiometer can be used for motor speed adjustment.
 - C. The external analog input voltage can be used for motor speed adjustment.
 - D. The external PWM input can be used for motor speed adjustment: pulse duty ratio from 10% to 90%
- Linear speed adjustment, pulse frequency, 1 k - 10 KHZ, pulse amplitude: 5 v

Wiring note:

Note that the sequence of wiring UVW three-phase motor and sale of hall signal lines and the connection sequence of the power cord

Power Parameter Setting:

Note: to prevent electric pilot time to super power operation and damage Motor, please according to the above numerical combined with electrical power properly set. Great changes have taken place when the load and lead to electricity Actual operation power more than setting will go into the drive protected mode.