



- Products

VRE-601 (SINGLE POINT LOAD CELL)

Description

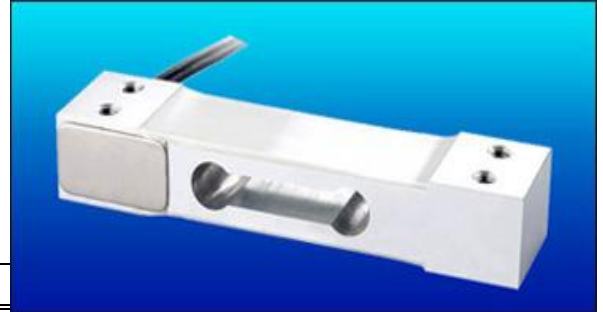
VRE 601 is a Strain Gauge based Low profile bending beam Load Cell and is ideal for Bench, Counting, Floor, Postal and Retail Scales. It is designed for low eccentric load sensitivity. It is Constructed from Anodized Aluminum Alloy.

Features

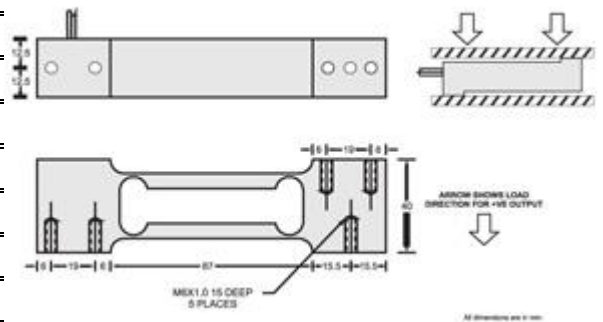
- Single Point Capability with Minimum Off-center Error.
- Low Profile Bending Beam Load Cell Design.
- Supports the Platform Size of 400 x 400 mm.
- Moisture Proof Sealing for Harsh Environment.

Applications

- Check Weighers.
- Bagging Machines.
- Bench, Counting & Postal Scales.



Performance Specification	
Standard Capacities	3, 6, 10, 15, 20, 30, 40, 60 - Kgf
Excitation Voltage	10 VDC- Maximum 15 VDC
Nominal Output	2.0 mV/ V
Non - Linearity	< ±0.025% FSO
Hysteretic	< ±0.02% FSO
Non-Repeatability	< ±0.01% FSO
Creep (30 minutes)	< ±0.03% FSO
Zero Balance	±5.0% FSO
Input Resistance	420 ± 15 Ohms
Output Resistance	350 ± 3 Ohms
Insulation Resistance (50 VDC)	> 1000 Mega Ohms
Cable Length (4 Core Screened)	1 mt. Minimum
Safe Overload of Rated Capacity	150%
Ultimate Overload of Rated Capacity	200%
Temp. Compensated Range	0-60 °C
Temperature Effect on Output	< 0.0015% FSO/ °C
Temperature Effect on Zero	< 0.0020% FSO/ °C
Platter Size	-
Eccentric Load Effect	< 0.02% of FSO at 1/3 rated load placed within the specified sized platter
Deflection	< 0.5 mm at FSO
Tightening Torque	2 m.kg.
Finish & Construction	Anodized Aluminum Alloy
Environmental Protection Class	IP65



Electrical Termination

	+Input	Red
	+Output	Green
	-Input	Black
	-Output	White